

Historic, Archive Document

Do not assume content reflects current scientific knowledge, policies, or practices.

62.6

RECEIVED
★ SEP 22 1927 ★
U. S. Department of Agriculture

MALONEY BROTHERS NURSERY COMPANY



FALL CATALOG
1927

DANVILLE, N.Y.



Our 43rd Year Selling Direct to the Planter



Whether you buy one thousand trees or a single shrub you cannot go wrong in buying from us by mail.

We pledge ourselves to give service to the planter which means complete satisfaction.

Furthermore, we guarantee our stock to be positively free from disease and to arrive at destination in a satisfactory condition. Should any arrive otherwise, if the consignee will notify us within five days after arrival we will immediately replace the unsatisfactory items or refund your money.

We strive to avoid mistakes but in the event that any nursery stock sold by us should prove untrue to name under which it is sold, we hereby agree, on proper proof of such untruthfulness to name, to replace the original order or to refund the purchase price.

Our entire capital of \$150,000 is back of this guarantee.

A. E. MALONEY,

President.



*Visit Our 400 Acres Of Nursery
Our Modern Packing House And Office
We Are Located 70 Miles South of Buffalo, N. Y.
60 Miles North of Elmira, N. Y.
On the D. L. & W. R. R.*

10% CASH DISCOUNT

for FALL 1927

We allow 10% Discount

on all cash orders mailed on or before October 12th
5 per cent Discount after October 12th

Fall Planting Is Advisable

UNIFORM moisture and temperature of the ground are favorable to root formation. Stock planted in the Fall becomes well established long before the ground is fit for planting in the Spring. Adverse conditions commonly prevailing in the Spring, such as making gardens, usual and regular Spring farm work and heavy rains many times make it impossible to plant until very late, thus shortening the growing season. Fall is recognized as an ideal time to plant and is endorsed by Horticultural Experimental Stations. By setting now you will gain fully half a growing season over Spring planting.

Our Shipping Season usually opens about the 10th of October and continues until cold weather.

Order Early for orders are shipped in the order they are received. We cannot delay those received first for ones coming later on, therefore advise placing orders early.

Rates.—Less than ten at each rate. Ten to fifty at ten rate. Fifty or more at hundred rate.

Terms. 10% Discount on all cash orders mailed on or before October 12th. We will ship trees and plants C. O. D., provided 25 per cent of the total of your order is sent in cash with order. If the order goes by express you pay the balance to your express agent upon arrival. If the order goes by freight you pay the balance at your bank, where you will also find Bill of Lading which you present to your freight agent who will deliver shipment to you.

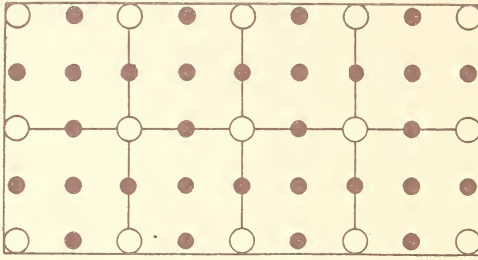
How to Remit. By Check, Bank Draft, Express Money Order, Post Office Money Order or Registered Letter.

Boxing and Packing Free. We box and pack all shipments without charge.

Our References

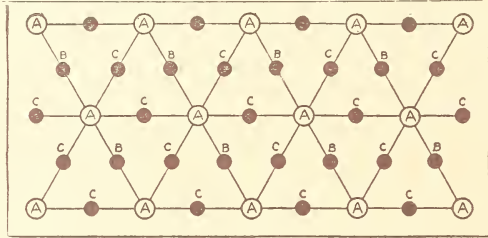
MERCHANTS & FARMERS BANK . . . DANVILLE, N. Y.
LIVINGSTON COUNTY TRUST CO. GENESEO, N. Y.
CITIZENS BANK OF DANVILLE DANVILLE, N. Y.
R. G. DUN COMMERCIAL AGENCY NEW YORK CITY
BRADSTREET'S COMMERCIAL AGENCY . . . CHICAGO, ILL.
ANY BUSINESS HOUSE IN DANVILLE, N. Y.

Suggestions on Orchard Planting



TRIANGULAR PLAN for Setting an Orchard A permanent, set 40 ft. apart. C and B fillers, 20 feet apart. C fillers to be removed in fifteen years. B fillers to be removed in 25 years. These are the distances adopted by most planters.

SQUARE PLAN for Setting an Orchard. Open circle represents permanents, 40 ft. apart; and dots fillers, 20 ft. apart. The latter to be removed in twenty years. These are distances adopted by most planters.



Number of Trees or Plants to an Acre. The following table will show how many trees or plants are required for an acre at any distance apart.

Distance	Square Method	Triangular Method
40 ft. apart	27 trees	31 trees
35 ft. apart	35 trees	40 trees
30 ft. apart	50 trees	55 trees
25 ft. apart	70 trees	80 trees
20 ft. apart	110 trees	125 trees
18 ft. apart	135 trees	155 trees
15 ft. apart	195 trees	225 trees
12 ft. apart	305 trees	350 trees
10 ft. apart	435 trees	505 trees
8 ft. apart	680 trees	775 trees
6 ft. apart	1,210 trees	1,600 trees
5 ft. apart	1,745 trees	2,010 trees
4 ft. apart	2,722 trees	3,145 trees
3 ft. apart	4,840 trees	5,590 trees
2 ft. apart	10,890 trees	12,575 trees
1 ft. apart	43,560 trees	50,300 trees

Suitable Distances for Planting

Apples, Standard	30 to 40 feet
Apples, Dwarf	8 to 10 feet
Pears, Standard	18 to 20 feet
Pears, Dwarf	10 feet
Peaches and Apricots	16 to 18 feet
Cherries, Sweet	18 to 20 feet
Cherries, Sour	15 to 18 feet
Plums	16 to 20 feet
Quinces	10 to 12 feet
Grapes	8 to 10 feet
Currants	3 to 4 feet
Gooseberries	3 to 4 feet
Raspberries	3 to 4 feet
Blackberries	5 to 7 feet
Strawberries	1½ by 1½ feet
Asparagus, in beds	1 by 1½ feet
Asparagus, in fields	1 by 3 feet



CERTIFICATE

No. 2443

STATE OF NEW YORK

DEPARTMENT OF AGRICULTURE AND MARKETS

BERNE A. PYRKE, COMMISSIONER

Certificate of Inspection of Nursery Stock

This is to certify that the nursery stock of MALONEY BROS. NURSERY CO., INC. of DANSVILLE, County of LIVINGSTON, State of New York, has been duly examined in compliance with the Agriculture and Markets Law and has been found to be apparently free from all injurious insects and plant diseases. This certificate is valid until September 1, 1928.

Dated, Albany, N. Y., September 1, 1927.

BERNE A. PYRKE, Commissioner.



Why We Can Sell Trees At One-Half Agents' Prices

It is impossible for the agent to sell you trees or plants at our prices for he represents some retail house which buys from the grower, who must make a profit. This we will term profit No. 1. The retail house he sells for must have a profit which is profit No. 2. Then the agent who has big traveling expenses must get a price high enough to cover his expenses, as well as his commission, which is profit No. 3. Consequently the same tree which we sell direct by catalog for 80c, the agent must necessarily sell for \$1.60 to \$2.00.

Fall Planting Instructions

This is important—Read it carefully.

Care of Stock on Arrival. All stock should be planted immediately upon arrival; but if not convenient to do so, open bundle and heel roots in the ground, covering them thoroughly.

Plant When the Soil is Reasonably Dry.

Pruning. Roots are sometimes bruised in digging. For best results it is imperative that you trim about one-fifth of the root, making a smooth cut, thus removing all bruised ends.

Planting. Dig the holes deep enough so the trees or plants will be set one inch deeper than they were in the nursery row, and wide enough to admit the roots to spread out in their natural position. Having dug the hole as directed, let one person hold the stock upright and the other shovel in the earth; fill the hole about one-fourth with the richest dirt, pack it solidly, then put in one pail of water, now fill the hole two-thirds with dirt, pack firmly, then fill up the balance of the hole and pack well.

Labels. Labels should be removed. The wires will cut and damage the limbs.

Cultivation. Hoe around planted stock about every two weeks during May, June, July and August.

These planting directions apply to all kinds of nursery stock. When planting in the Fall, prune the roots only. Prune tops in late March. However, do not prune tops of evergreens.

Shrubs that bloom before the middle of June should be trimmed just after the blooming period to ensure a profusion of bloom the following year. Shrubs like Altheas and Hydrangeas which bloom later should be pruned in the Spring. Fading flowers and forming seed vessels should, where practicable, be removed, that the strength which otherwise would go into ripening seeds may be diverted to forming flower buds for the ensuing year. In trimming shrubs avoid stiff unnatural results and cut so the plant will bear long, graceful branches.

Winter Protection. A mulch of manure or leaves about three inches deep, spread about the stock before the ground becomes frozen, prevents the alternate freezing and thawing which is disastrous. They may be confined by a little dirt. Allow to remain until about the 10th of April, then work it into the ground.

We Guarantee Our Stock

TO ARRIVE AT DESTINATION IN A SATISFACTORY CONDITION. Should any arrive otherwise, we expect the consignee to notify us within five days after arrival and we will immediately duplicate the unsatisfactory items.

TO BE POSITIVELY FREE FROM DISEASE.

WE STRIVE TO AVOID MISTAKES, but in the event that any nursery stock sold by us should prove untrue to name under which it is sold, we hereby agree, on proper proof of such untruthness to name, to replace the original order or to refund the purchase price.

This guarantee is backed by over 40 years' experience and a capital of \$150,000.



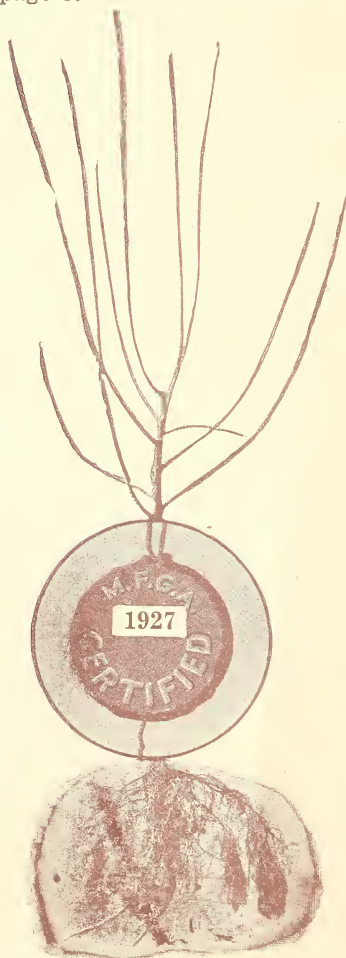
Certified Fruit Trees

WHEN you set out an orchard to Cortlands, McIntosh, Baldwins, Greenings or some other desirable variety of apple or a carefully planned combination, you want to be sure of your results without waiting to see what happens when trees begin to bear.

In accordance with our established policy, we have about 45,000 apple trees certified as being true to name by Dr. J. K. Shaw, Agent for Certification for the Massachusetts Fruit Growers Association, Inc.

Certification is an extra precaution taken for the benefit of customers who prefer it and who wish to pay a few cents additional per tree to cover the cost of the work—see prices listed on page 5.

All our fruit trees are budded from bearing trees and are covered by the same guarantee as the Certified Apple trees but at no additional expense.



Baldwin	R. I. Greening
Cortland	Rome Beauty
Delicious	Roxbury Russet
Duchess	Smokehouse
Early Harvest	Stark
Fall Pippin	Stayman's Winesap
Fameuse	Sweet Bough
Gravenstein	Sweet Delicious
Grimes' Golden	Tolman Sweet
Golden Russet	Transcendent
Hyslop	Twenty Ounce
Jonathan	Wagener
King	Wealthy
McIntosh	Williams Early Red
Maiden's Blush	Winter Banana
Northern Spy	Wolf River
Pumpkin Sweet	Yellow Transparent
Red Astrachan	York Imperial
Red Spy	

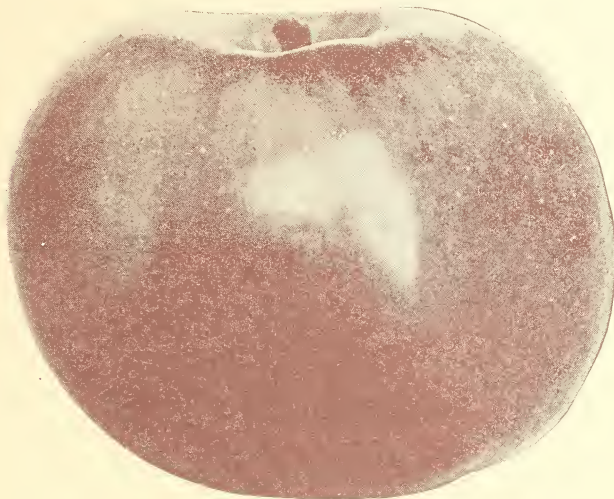


Reference to page 5 will show two price lists on Apples—one of them covering all varieties of standard Apples which come under the usual Maloney Guarantee, the other list embracing certified varieties at a price slightly higher to cover the cost of certification.

Above is a photograph showing certified Apple Tree bearing the seal.



APPLES



CORTLAND

Prices of Certified Standard Apple Trees

(For Varieties See Page 4)

*Budded on Whole Branched Root Imported French Seedlings
and Dug by Steam Power*

	Age	Height	Caliper		Each	10	100
Largest Size	2 Yr.	5 to 7 Ft.	$\frac{3}{4}$ and up	XXX	.85	\$7.50	\$55.00
Medium Size	2 Yr.	4 to 5 Ft.	$\frac{5}{8}$ to $\frac{3}{4}$	XX	.75	6.50	45.00
Largest Size	1 Yr.	3 to 5 Ft.	Sturdy Buds	XXX	.75	6.50	45.00

Prices of All Varieties of Standard Apple Trees

(Not Certified)

*Budded on Whole Branched Root Imported French Seedlings
and Dug by Steam Power*

	Age	Height	Caliper		Each	10	100
Largest Size	2 Yr.	5 to 7 Ft.	$\frac{3}{4}$ and up	XXX	.80	\$7.00	\$50.00
Medium Size	2 Yr.	4 to 5 Ft.	$\frac{5}{8}$ to $\frac{3}{4}$	XX	.70	6.00	40.00
Smaller Size	2 Yr.	3 to 4 Ft.	$\frac{1}{2}$ to $\frac{5}{8}$	X	.60	5.00	30.00
Largest Size	1 Yr.	3 to 5 Ft.	Sturdy Buds	XXX	.70	6.00	40.00

RATES—Less than ten at each rate. Ten to fifty at ten rate. Fifty or more at hundred rate.

PARCEL POST. First class 3-foot trees sent by parcel post, postage prepaid, for 50 cents each, \$4.50 for 10.

10% Discount on all Cash Orders mailed on or before October 12th.

5% Discount after October 12th.

The wonderful new Cortland Apple originated at the New York State Experimental Station, Geneva, N. Y. This variety has won the highest honors obtainable in the horticultural world. The American Pomological Society awarded to Cortland the Wilder silver medal for new fruits. To qualify for a Wilder medal, a new fruit must exhibit superiority to all existing varieties with which it will compete. Fruits about three weeks later than McIntosh. Bears very young and full crop every year. We secured our buds direct from bearing trees which were propagated at the New York State Experimental Station. There is a big demand for this variety and we would suggest placing your order early.



MCINTOSH RED

Summer Varieties

Early Harvest. Medium to large size; pale yellow; tender, with a mild, fine flavor. Early July to end of Aug.

Red Astrachan. Tree hardy and regular bearer, a very vigorous grower, fruit large, roundish, nearly covered with deep crimson, overspread with a thick bloom; juicy, rich and beautiful. July and Aug.

Sweet Bough. Large, pale yellow; sweet, tender and juicy. Tree a compact grower and abundant bearer. August.

Williams Early Red. Medium sized; dark red, sometimes yellow splashed; flesh is crisp, tender, juicy and sub-acid. August.

Yellow Transparent. Medium size, roundish oblate, slightly conical; skin pale yellow when fully matured; flesh tender, juicy, sprightly, sub-acid; good. August.

Autumn Varieties

Duchess of Oldenburg. Medium size; red striped; flesh white, juicy and excellent and make fine fillers; require small root and branch space. Crops nearly always large.

Fall Pippin. Large, yellow, tender, juicy and rich. Fine in all localities; tree vigorous. Sept. and Oct.



BELLEFLOWER

Gravenstein. An attractive and excellent quality apple. Fruit large and uniform in size, skin thin, tender, greenish yellow overlaid with dark red. September to November.

Maiden's Blush. Large, flat; pale yellow with a red cheek; tender and pleasant. Tree an erect grower and a good bearer. September and October.

Pumpkin Sweet. Very large; yellowish russet, sweet and rich. Valuable. October and November.

Rambo—Medium, red and yellow. Mild flavor. Excellent old variety. October to December.

Winter Varieties

Baldwin. This is the leading commercial variety in the American markets. One of the best storage apples for export trade. Baldwin is planted extensively and succeeds wonderfully well in all states east of the Mississippi. No variety yields larger crops, bears shipment better or is more attractive in color, size and shape. It is highly esteemed for an eating and cooking apple. Fruit large, bright red, crisp, juicy and rich. Trees vigorous, upright and productive. For a commercial orchard it can be relied upon. December to March.

Belleflower. Adapted to the northern and middle states; highly esteemed for its excellent dessert qualities. October to February.

Ben Davis. Fruit is medium to large. Bright red or red striped with clear yellow. Season—January to June.

Cortland. (New variety developed by New York State Experimental Station.) It is a beautiful red apple, larger than the McIntosh, of better quality and matures a month later. Keeps late in Winter and can be handled and shipped like the hardiest of other market varieties. Has the caliber of a real leader. The Cortland cannot be surpassed by apples grown anywhere in the world, and apple growers have an opportunity to specialize in a distinctive fruit that will bring renown and profit to the industry.

Delicious. No variety has ever so quickly gained popularity in so many different apple sections of our country. Fruit large, nearly covered with brilliant dark red, flesh fine grained, crisp and melting, juicy with a delightful aroma of very highest quality. A splendid keeper and shipper. Tree one of the hardiest. November to April.

Fameuse. (Snow Apple.) Medium size; deep crimson; flesh snowy white, melting and delicious. October to December.

Gano. An improved Ben Davis, adding to the good qualities of that variety a much handsomer fruit of deep, dark red. Dec. to March.



Grimes' Golden. Medium to large size; skin golden yellow, sprinkled with gray dots; flesh crisp, tender, juicy, sprightly, very good to best. December to April.

Jonathan. A beautiful red apple, highly flavored. Tree long-lived, productive, and an early bearer. November to January.

King. Flesh yellow, crisp, tender, juicy and sub-acid. Skin fine yellow, mottled with orange red, splashed with carmine. Oct. to Jan.

Mammoth Black Twig—Dark red. December to April.

McIntosh Red. An exceedingly valuable, hardy, attractive apple; good size; nearly covered with red. Flesh white, fine, very tender, juicy and refreshing. Tree hardy, vigorous, a good annual bearer—comes into fruiting early, yielding large crops. Do not overlook McIntosh when selecting varieties for commercial and orchard planting. It has no superior as an early winter apple. October to January.

Northwestern Greening. A round, large, attractive, greenish yellow apple; flesh fine grained, juicy, firm, good quality. Oct. to April.

Northern Spy. A hardy, large, red, winter apple. Flesh juicy, rich, crisp, tender, aromatic, of good flavor. Tree very healthy, strong grower, rugged. Blossoms very late, escaping frosts. Dec. to March.

Rhode Island Greening. Large. Flesh yellowish, firm, fine grained, crisp, tender, juicy, slightly sub-acid, very good. Skin grass green to yellow, sometimes with brownish-red blush. Tree large, strong, vigorous, wide spreading. Keeps until April. Ripens in December.

Rome Beauty. Large, round; mottled and striped in different shades of red; flavor and quality way above the average; appearance and size are its valuable points. Dec. to Mar.

Roxbury Russet. Medium to large. Surface rough, greenish covered with russet. December to May.

Stark. Large, striped, mild, sub-acid, good. Valuable as a keeper January to May.

Smokehouse. Fruit medium to large uniform size and shape. Color yellow or greenish mottled with rather dark red. Oct. to Mar.

Stayman's Winesap. Medium to large, attractive; green and yellow, almost hidden by dark red stripes; flesh yellow; bears young, often producing a barrel to a tree when five years old. Bears every year. December to April.

Tolman Sweet. Medium size; color, light yellow; flesh white, firm, rich, and very sweet. Nov. to April.

Twenty Ounce. Very large, yellow, striped red, fine quality apple; good keeper. Oct. to January.



BALDWIN

Wagener. Fruit large, tender, firm and very juicy. Bright pinkish red striped with carmine. Tree vigorous and hardy. December to May.

Wealthy. Fruit large, roundish, skin smooth, oily, covered with a dark red. Flesh white, tender, juicy, vinous, sub-acid; particularly valuable for cold climates. Planted as a filler in many sections. October to January.

Winter Banana. Fruit large size, perfect in form, golden yellow, and beautifully shaded and marbled with bright crimson red; flesh lemon-yellow, fine grained. November to January.

Wolf River—Fruit large, flattened, conical, highly colored. September to December.

York Imperial. The fruit is of medium size, skin yellow and almost wholly covered with two shades of red. November to February.

Hyslop Crab—Fruit deep crimson; October.

Transcendent Crab—Fruit bright yellow, striped with red. September to October.



DELICIOUS

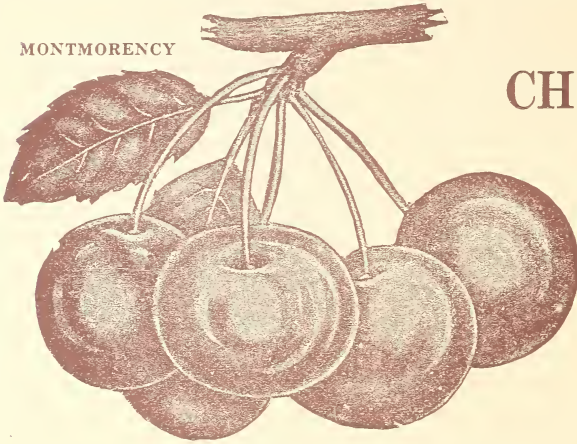
See Article on Page 4 for Certified Apple Trees



MONTMORENCY

CHERRIES

Sweet
and
Sour



Prices of All Varieties

Budded on the Best Whole Branched Root French Imported Cherry Stock and Dug by Steam Power

	Age	Height	Caliper		Each	10	100
Largest Size	2 Year	5 to 7 Ft.	3/4 and up	XXX	.80	\$7.00	\$60.00
Medium Size	2 Year	4 to 5 Ft.	5/8 to 3/4	XX	.70	6.00	50.00
Smaller Size	2 Year	3 to 4 Ft.	1/2 to 5/8	X	.60	5.00	40.00
Largest Size	1 Year	3 to 4 Ft.	Sturdy Buds	XXX	.70	6.00	50.00

RATES—Less than ten at each rate. Ten to fifty at ten rate. Fifty or more at hundred rate.

PARCEL POST—First Class 3 to 4 feet Trees sent by parcel post, postage prepaid, for 50c each, \$4.00 per 10.

10% Discount on all Cash Orders mailed on or before October 12th.

5% Discount after October 12th.

Where to Plant. On any kind of land, other than wet. They will thrive beautifully on a sandy or gravelly soil.

Sour Cherries

Dyehouse. A hardy and valuable cherry. The earliest cherry of fine quality. Often bears at two years old. Has the smallest pit of any cherry known. Early June.

Early Richmond. This is one of the most valuable and popular cherries and is unsurpassed for cooking purposes. This hardy cherry fruits on young trees soon after planting. It is a good old variety that yields such marvelous crops in the gardens. Fruit is medium size, round and dark red. The flesh tender, juicy, and sub-acid. Ripens in June.

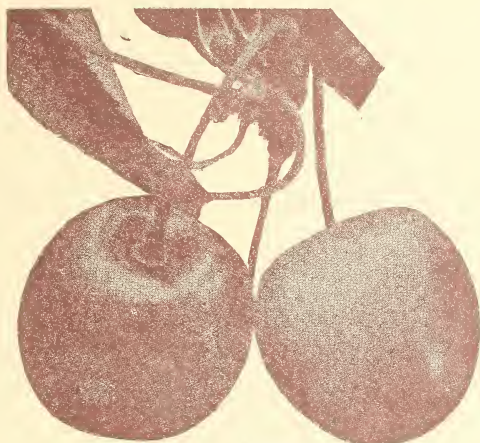
English Morello. Fruit dark red, quality good, with a rich, acid flavor; late. Tree very hardy, for extremely cold latitudes. August.

May Duke. Large, red; juicy and rich; an old, excellent variety; vigorous, productive. June.

Montmorency. This is the most popular sour cherry grown in America. No one questions its supremacy. It leads in the demand for this fruit, in the markets, in the canning factories and for home use. It is a large red cherry of the finest flavor. The flesh is of good quality and sub-acid. The trees are the cleanest and best growers and are less subject to disease, less affected by wet weather and are the best bearers of all our sour varieties. The Montmorency is a good shipper, very attractive looking and always brings good prices. Ripens the last of June.

Wragg. Much like the English Morello. One of the hardiest cherries and has produced annual crops at the northernmost limit of cherry culture. August.

With the new cold pack now in operation cherry fruit is in big demand. Plant a sour cherry orchard



LAMBERT

Sweet Varieties of Cherries

Black Tartarian. This fine old variety produces immense crops of very large, purplish black fruits of mild, sweet, jelly-like consistency. Late June and early July.

Bing. This valuable new black cherry succeeds everywhere. Tree very thrifty and upright grower, very hardy, and productive, flesh very solid, flavor of the highest quality, a fine shipping and market variety. July.

Governor Wood. Very large, light yellow, marbled with red; juicy, rich, and delicious. Last of June.

Lambert. A fine sweet variety originating in Oregon, and one of the largest of all cherries, dark purple red, turning almost a jet black when ripe. Flesh firm, rich, juicy. Tree rugged, strong grower and an enormous bearer. July.

Napoleon. Tree medium size, erect with roundish head, fruit borne

generally in twos, very large, oblong cordate, light lemon-yellow with red cheeks in the sun. Flesh very hard, brittle, colorless, reddish at the stone. Good, excellent bearer. June.

Schmidt's Bigarreau. The fruit is of very large size, of a deep mahogany color. The flesh is dark, tender, very juicy with a fine, rich flavor. Fruit grows in clusters. July.

Windsor. A splendid, large, liver-colored cherry that hangs a long time and rots but little. The flesh is remarkably firm and good, the tree very hardy and fruitful. Exceedingly valuable for late market and home use. July.

Yellow Spanish. Large, pale yellow with red cheeks; firm, juicy and excellent, one of the best light-colored cherries; vigorous and productive. Last of June.

Medina, N. Y.

Maloney Bros. Nursery Co.,
Dansville, N. Y.
Gentlemen:

Just a line to say that my 432 Montmorency Cherry trees came Monday the 28th.

All in fine condition and correct count. Splendid trees and I am well satisfied.

Very truly yours,
FRANK E. WEST.

Parryville, Pa.

Maloney Bros. Nursery Co.,
Dansville, N. Y.
Gentlemen:

I am enclosing a picture of my 250 Montmorency Cherry tree orchard. It is five years old and a beauty. Right along the public road.

Very truly yours,
CHARLES MARKLEY.

MALONEY hardy upland grown stock succeeds best.
The 10% discount allowed will pay transportation.



BARTLETT



PEARS

BUDED ON
 WHOLE
 BRANCHED
 ROOT
 IMPORTED
 SEEDLINGS
 AND DUG BY
 STEAM POWER

Prices of Hardy Upland Grown Standard Pear Trees

	Age	Height	Caliper		Each	10	100
Largest Size	2 Year	5 to 7 Ft.	$\frac{3}{4}$ and up	XXX	.80	\$7.00	\$60.00
Medium Size	2 Year	4 to 5 Ft.	$\frac{5}{8}$ to $\frac{3}{4}$	XX	.70	6.00	50.00
Smaller Size	2 Year	3 to 4 Ft.	$\frac{1}{2}$ to $\frac{5}{8}$	X	.60	5.00	40.00
Largest Size	1 Year	3 to 5 Ft.	Sturdy Buds	XXX	.70	6.00	50.00

RATES—Less than ten at each rate. Ten to fifty at ten rate. Fifty or more at hundred rate.

PARCEL POST—First Class 3-4 ft. Pear trees sent by parcel post, postage prepaid, for 50c each, \$4.00 per 10.

10% Discount on all Cash Orders mailed on or before October 12th.

5% Discount after October 12th.

Bartlett. Large; coloring, when fully ripe, to waxen yellow with red blush; juicy, melting, highly flavored, a most delicious fruit; tree bears early and abundantly. We have sold many large orchards of this variety. The fruit ripens just at a time when there is but little competition; in fact there is no pear ripening at the same time that is in the Bartlett class. September.

Beurre D'Anjou. Tree is a vigorous grower, hardy and prolific. The pears are of large size, green in color, but often yellowing when thoroughly ripe. They are very juicy and luscious and of the best quality. For late fall and early winter, we have no better variety. October to January.

Beurre Clairgeau. Large; light yellow, shaded with crimson. Flesh yellowish. November to January.

ORDER EARLY



Beurre Bosc. A large and beautiful russet pear, very distinct with a long neck; melting or nearly so, high flavored and delicious; bears well. This pear is generally conceded to be a high quality pear. Early October.

Clapp's Favorite. It is a large, long, yellow pear, richly flushed with russet red next the sun. The flesh is fine grained, juicy, melting and buttery. Earlier than Bartlett. It is very pleasant to eat out of hand and is therefore a favorite for garden planting. This variety should be included in all large plantings of pear trees. Early August.

Duchess D'Angouleme. A most dependable cropper, often fruiting the first season after planting. Fruit large, frequently weighing a pound. A dull greenish yellow, spotted russet, flesh white, rich and good quality. An all-round profitable market pear. October and November.

Flemish Beauty. Pale yellow, covered with russet. Large, sweet and melting. September and October.

Howell. Large, yellow, with red cheek; early bearer and productive. September and October.

Kieffer. Large, rich golden yellow, sometimes tinted red on the sun-exposed side; fair quality, excellent for canning. To properly ripen should remain on the trees until leaves begin to fall, then gather carefully and allow to ripen in a cool dark cellar. October to Nov.

Koonce. A very popular early variety. Fruit large, yellow, one-half nearly covered with red. Does not rot at the core. Very productive and a good shipper. July.

Lawrence. Medium to large, golden yellow, with melting, aromatic flesh. Unsurpassed as an early winter pear, bearing large crops annually. November and December.

Sheldon. A large, round, russet and red pear of very fine quality, melting, rich and delicious. October.

Seckel. A beautiful and delicious little pear that is the standard of excellence in its class. One of the richest and highest flavored pears known, always in demand. The tree makes a somewhat slow but stout growth. September to Oct.

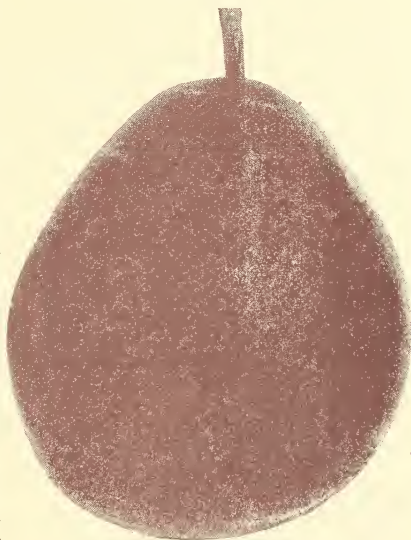
Wilder. One of the very earliest pears, of excellent quality. Of medium to large size, irregular, bell-shaped; pale yellow with shadings of russet-red. Early August.



Popular Pear Collection

4 First Class XXX Trees for \$2.50

1 Bartlett	1 Seckel
1 Clapp's Favorite	1 Sheldon



SECKEL

Our 43rd Year Selling Direct to the Planter

Whether you buy one thousand trees or a single shrub you cannot go wrong in buying from us by mail.

We pledge ourselves to give service to the planter which means complete satisfaction.

We guarantee our stock to be positively free from disease and to arrive at destination in a satisfactory condition. Should any arrive otherwise, if the consignee will notify us within five days after arrival we will immediately replace the unsatisfactory items or refund your money.

We exercise every human caution to have our stock true to name but in the event that any nursery stock sold by us should prove untrue to name under which it is sold, we hereby agree, on proper proof of such untruthness to name, to replace the original order or to refund the purchase price.



PEACHES

Prices of Hardy Upland Grown Peach Trees

	Age	Height	Caliper	Each	10	100
Largest Size	1 Year	4 to 5 Ft.	$\frac{9}{16}$ and up	XXX	.60 \$4.00	\$30.00
Medium Size	1 Year	3 to 4 Ft.	$\frac{7}{16}$ to $\frac{9}{16}$	XX	.55 3.50	25.00
Smaller Size	1 Year	2 to 3 Ft.	$\frac{5}{16}$ to $\frac{7}{16}$	X	.50 3.00	20.00

RATES—Less than ten at each rate. Ten to fifty at ten rate. Fifty or more at hundred rate.

PARCEL POST—First Class $2\frac{1}{2}$ ft. small size trees sent parcel post, postage prepaid, 40c each, \$2.75 per ten.

10% Discount on all Cash Orders mailed on or before October 12th.

5% Discount after October 12th.

Belle of Georgia. Large, white with red cheek. Flesh is white, firm and fine flavor. Tree rapid grower and very productive. July. Free.

Carman. Large, early white with deep blush; spicy. Prolific bearer; good market variety. Aug. Free.

Chair's Choice. Large, yellow, flesh very firm, ripens after Smock; great bearer. October. Free.

Champion. Large white freestone peach; red-cheeked, sweet, rich, juicy. August. Free.

Early Crawford. Large, rich yellow with red cheek; has all the characteristics that gratify the taste. Early Sept. Free.

Elberta. Beautiful peach of good quality, best orchard variety and for planting in gardens. It is harder in bud than many varieties, therefore a more uniform cropper. Large, yellow, red cheek, juicy and high flavor. Early Sept. Free.



ELBERTA

Late Crawford. Superb yellow peach; of large size and excellent quality; great bearer. Late Sept. Free.

Greensboro. Color greenish-white, shaded and splashed with dark red. Owing to extreme hardiness we recommend it for sections where other varieties do not succeed. Late July. Free.

Heath Cling. The fruit is large and round. White, juicy and fine quality. October. Clingstone.

J. H. Hale. Very large; deep golden yellow overlaid with bright carmine. The flesh is deep yellow, fine grained with a very delicious flavor. Late August. Free.

Kalamazoo. Large, golden yellow, with crimson cheek; flesh thick, yellow, superb quality, small pit. First of September. Free.

Mountain Rose. Large, red, white flesh, juicy and excellent. Early August. Free.

Niagara. Tree hardy, healthy in leaf and bud and bears abundantly. Fruit large, oval, yellow with brilliant red cheek. Last of August. Free.

Rochester. Is in a class by itself because it is the only good sized yellow freestone. Excellent shipper. Mid-August. Free.

Salway. Large, roundish ovate, yellow, with a crimson cheek; flesh deep yellow, red at the pit; sweet, juicy, good. Valued as one of the best late peaches for market. October. Free.

Smock Free. (Beers Smock) Fruit large; oval; skin orange yellow, mottled with red; a good market sort. Last of Sept. Free.

Yellow St. John. Of medium size, orange yellow with a red blush on sunny side; flesh tender, juicy and quality very good. Mid-Aug. Free.

Maloney Peaches Budded from Bearing Trees



PLUMS

Prices of Hardy Upland Grown Plum Trees

Budded on Whole Branched Root French Imported Myroblan Stock and Dug by Steam Power

	Age	Height	Caliper		Each	10	100
Largest Size	2 Year	5 to 7 Ft.	3/4 and up	XXX	.70	\$6.00	\$45.00
Medium Size	2 Year	4 to 5 Ft.	5/8 to 3/4	XX	.60	5.00	35.00
Smaller Size	2 Year	3 to 4 Ft.	1/2 to 5/8	X	.50	4.00	25.00
Largest Size	1 Year	3 to 5 Ft.	Sturdy Buds	XXX	.60	5.00	35.00

RATES—Less than ten at each rate. Ten to fifty at ten rate. Fifty or more at hundred rate.

PARCEL POST—First Class small size 3-4 ft. trees sent by parcel post, postage prepaid, for 40c each, \$3.00 per ten.

10% Discount on all Cash Orders mailed on or before October 12th.
5% Discount after October 12th.

Bradshaw. A very large and fine early plum, dark violet red, juicy and good. Very productive; valuable for market. Middle of Aug.

Felleberg Prune. A fine prune, oval, purple; flesh juicy and delicious; parts from the stone; fine for drying; tree very productive. Early September.

German Prune. Medium, oval, purple or blue, juicy, rich, fine. Tree vigorous and very productive. One of the best. Owing to its keeping qualities it is highly prized for shipping. September.

Grand Duke. One of the best late plums for market, as large as Bradshaw, of same color, entirely free from rot. Last of September.

Lombard. It is a handsome reddish plum, the flesh yellow, juicy and pleasant. It is an excellent variety and can be relied on for a crop when other varieties fail. August.

Maloney Prune. Color dark blue. Flesh yellow and delicious. It comes into bearing at an early age. Season extending from September until freezing weather.

Reine Claude. (Bavay's Green Gage.) Round, oval, greenish, marked with red in the sun; a great favorite. September.

Shropshire Damson. One of the favorite Damsons. Fruit oval; tree enormously productive; fruit of medium size produced in thick clusters of groups, dark purple color. October.

Yellow Egg. Golden yellow covered with thick bloom. Flesh golden yellow. Rather juicy. Tree large, very productive. September.

York State Prune. Large size, color dark blue, covered with purple. Delicious. One of the largest, best in quality and most productive of all plums. Tree is a vigorous grower and hardy. Last of August.

JAPAN PLUMS

Abundance. Comes into bearing remarkably young and yields abundantly. Fruit of medium size, large when thinned; amber, with markings of red; juicy, sweet. August.

Burbank. One of the grand points about the Burbank is that it succeeds over a wide range of our country, and will stand the most severe winters. Fruit large, oval, with reddish purple skin; flesh yellow, juicy and good. August.

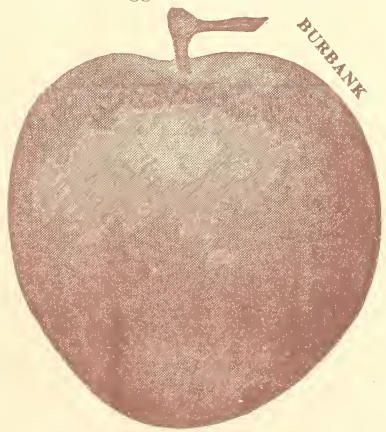
Red June. Medium to large; deep vermilion red; flesh light lemon-yellow, firm, slightly sub-acid, delightful. Ripens in early August.

Wickson. The largest of the Japan plums. The color is bright cherry-red, covered with a light bloom; the pit is small for so large a fruit, the flesh is thick, sweet, tender and rather dry. September.



Plum Collection for Hen Yard

- 4 2 Year large size trees for \$2.15
- 1 Bradshaw 1 York State Prune
- 1 Yellow Egg 1 Reine Claude



Note our Special Price on Plums



Dwarf Fruit Trees

DWARF fruit trees bear larger, better fruit, bear several years earlier and produce more returns for a given space than standard trees. This is all true and there are even more important points. The low, broad heads are within reach so that apples or pears can be easily picked. You can plant dwarf trees in your garden and still grow strawberries and most vegetables. With

dwarfs some varieties will bear the first year, all will the second and bear a full crop the fourth year.

Dwarf Apple trees are budded on Paradise or Doucin stock, and Dwarf Pear trees are budded on Quince stock. They will succeed in many places where standard trees fail. In a word, they are the kind of dwarf trees that will put their strength into fruit instead of wood.

DWARF APPLE TREES

Prices of all Varieties of Dwarf Apple Trees

	Age	Height	Caliper	Each	10	100
Largest Size	2 Year	4 to 5 Ft.	5/8 and up	XXX	.75	\$6.00 \$45.00
Medium Size	2 Year	3 to 4 Ft.	1/2 to 5/8	XX	.65	5.00 35.00

RATES—Less than ten at each rate. Ten to fifty at ten rate. Fifty or more at hundred rate.

PARCEL POST—First Class 2-3 feet Dwarf Apple Trees can be sent by parcel post, postage prepaid, for 55c each, \$4.50 per 10.

Baldwin	Grimes Golden	Rambo	Transcendent
Delicious	Jonathan	Red Astrachan	Twenty Oz.
Duchess	King	R. I. Greening	Yellow Transparent
Early Harvest	Maiden's Blush	Rome Beauty	W. Banana
Fall Pippin	McIntosh	Rox Russet	Wealthy
Fameuse	Northern Spy	Stayman's Winesap	Wagener
Gilliflower	Pound Sweet	Sweet Bough	Williams Early Red
Gravenstein			

DWARF PEAR TREES

Prices of All Varieties of Dwarf Pear Trees

	Age	Height	Caliper	Each	10	100
Largest Size	2 Year	4 to 5 Ft.	5/8 and up	XXX	.75	\$6.00 \$45.00
Medium Size	2 Year	3 to 4 Ft.	1/2 to 5/8	XX	.65	5.00 35.00

RATES—Less than ten at each rate. Ten to fifty at ten rate. Fifty or more at hundred rate.

PARCEL POST—First Class 2-3 feet Dwarf Pear Trees can be sent by parcel post, postage prepaid, for 55c each, \$4.50 per 10.

Anjou	Duchess	Lawrence	Sheldon
Bartlett	Flemish	Seckel	Wilder
Clapp's Favorite	Kieffer		

For Description and Season of Apples and Pears see pages 6-7; 10-11
 10% Discount on all Cash Orders mailed on or before October 12th.
 5% Discount after October 12th.



SHOWING DWARF APPLE BEARING FIRST YEAR



QUINCE TREES

Orange. The best of the older varieties, still more extensively cultivated than any other. Everyone is acquainted with the Orange Quince, a good old variety that never disappoints the planter; good for home use and for market. Its large golden yellow fruit of fine quality is to be seen in more or less quantity in nearly every garden or orchard every season, as it rarely fails to produce a crop. Ripens in October.

Meech's Prolific. Fruit is large, orange yellow, of great beauty and delightful fragrance. Tree a vigorous grower and immensely productive. Ripens between the Orange and the Champion. Last of October.

Champion. A large, late-ripening sort, that produces good and constant crops. One of the best for sections not subject to early frosts. Last of October.

Prices of all Varieties of Hardy Upland Grown Quince Trees

	Age	Height	Caliper		Each	10	100
Largest Size	2 Year	4 to 5 Ft.	$\frac{5}{8}$ and up	XXX	.80	\$7.00	\$60.00
Medium Size	2 Year	3 to 4 Ft.	$\frac{1}{2}$ to $\frac{5}{8}$	XX	.70	6.00	50.00
Largest Size	1 Year	3 to 5 Ft.		XXX	.70	6.00	50.00

RATES—Less than ten at each rate. Ten to fifty at ten rate. Fifty or more at hundred rate.

PARCEL POST—First Class 2 to 3 feet Quince Trees can be sent by parcel post, postage prepaid, for 60c each, \$5.00 per ten.

RUSSIAN APRICOTS ON PLUM ROOTS

Beautiful and delicious fruit. In quality and appearance is between plum and peach, combining qualities of both. Ripening early, together with its delightful flavor makes it one of the most valuable fruits. Tree hardy as the peach. The Russian varieties are quite distinct from the other European sorts; much hardier, earlier bearers and productive.

Alexander. Very hardy and immense bearer; fruit large, yellow, flecked with red; very beautiful, sweet and delicious. July.

Alexis. Very hardy and abundant bearer; yellow with red cheek; large to very large; slightly acid, rich and luscious. July.

Moorpark. One of the largest. Orange with red cheek; firm, juicy, with a rich flavor; very productive. August.

Prices of all Varieties of Apricot Trees

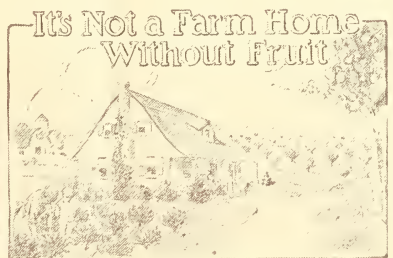
	Age	Height	Caliper		Each	10	100
Largest Size	2 Year	4½ to 6 Ft.	$\frac{9}{16}$ and up	XXX	.85	\$7.50	\$65.00
Medium Size	2 Year	3½ to 4½ Ft.	$\frac{7}{16}$ to $\frac{9}{16}$	XX	.75	6.50	55.00

RATES—Less than ten at each rate. Ten to fifty at ten rate. Fifty or more at hundred rate.

PARCEL POST—First Class 2½ to 3½ feet Apricot Trees can be sent by parcel post, postage prepaid, for 65c each, \$5.50 per ten.

10% Discount on all Cash Orders mailed on or before October 12th.

5% Discount after October 12th.



FRUIT IS RECOGNIZED AS A BUILDER OF HEALTH



**Practical Collections Compiled by Our President,
A. E. Maloney, for Garden Planting**
Plant Fruit Trees Grown Direct From Bearing Trees

\$2.75 Each

**MALONEY GARDEN
COLLECTION NO. 3**

- 1 Bartlett Pear
- 1 J. H. Hale Peach
- 1 Bradshaw Plum
- 1 Cortland Apple
- 1 Montmorency Cherry

All strictly first class, 2 year, 5-7 feet high.

Maloney Special Price, \$2.75.

**QUINCE TREE
COLLECTION NO. 4**

- 2 Orange
- 1 Champion
- 2 Meech's Prolific

All strictly first class 2 year 4-5 feet high.

Maloney Special Price, \$2.75.

**PEACH TREE COLLECTION
NO. 5**

- 1 Belle of Georgia
- 1 Hale
- 2 Elberta
- 1 Rochester
- 2 Early Crawford

All strictly first class 1 year 4-5 feet high.

Maloney Special Price, \$2.75.

**SWEET CHERRY TREE
COLLECTION NO. 6**

- 1 Black Tartarian
- 1 Napoleon
- 1 Governor Wood
- 1 Lambert

All strictly first class, 2 year, 5-7 feet high.

Maloney Special Price, \$2.75.

**PLUM TREE
COLLECTION NO. 7**

- 1 Lombard
- 1 Grand Duke
- 1 Abundance
- 1 Reine Claude
- 1 York State Prune

All strictly first class, 2 year, 5-7 feet high.

Maloney Special Price, \$2.75.

**EVERYBODY'S FAVORITE
COLLECTION NO. 8**

- 1 Cortland Apple
- 1 Black Tartarian Cherry

All strictly first class, 2 year, 5-7 feet high.

- 1 Concord Grape
- 1 Niagara Grape
- 25 Cuthbert Red Raspberries
- 25 Palmetto Asparagus

Maloney Special Price, \$2.75.

**STANDARD APPLE TREE
COLLECTION NO. 9**

Summer Variety

- 1 Yellow Transparent

Fall Variety

- 1 Fall Pippin

Winter Varieties

- 1 Cortland
- 1 Winter Banana

All strictly first class, 2 year, 5-7 feet high.

Maloney Special Price, \$2.75.

**DWARF APPLE TREE
COLLECTION NO. 10**

- 1 Red Astrachan (Summer)
- 1 Yellow Transparent (Summer)
- 1 Pound Sweet (Yellow) (Fall)
- 1 McIntosh (Red) (Winter)
- 1 Cortland (Red) (Winter)

All strictly first class 2 year 4-5 feet high.

Maloney Special Price, \$2.75.

**SWEET CHERRY TREE
COLLECTION NO. 11**

- 1 Early Richmond
- 1 Eng. Morello
- 2 Montmorency

All strictly first class, 2 year, 5-7 feet high.

Maloney Special Price, \$2.75.

**STANDARD PEAR TREE
COLLECTION NO. 12**

- 1 Clapp's Favorite
- 1 Seckel
- 1 Sheldon
- 1 Bartlett

All strictly first class 2 year 5-7 feet high.

Maloney Special Price, \$2.75.

ROSE COLLECTION NO. 13

- 1 Gruss an Teplitz—Red
- 1 Maman Cochet—Pink
- 1 Gen. Jacqueminot—Red
- 1 Frau Karl Druschki—White
- 1 Baron de Bonstetten—Red

All first class two year bushes.

Maloney Special Price, \$2.75.

**SHRUB COLLECTION
NO. 14**

- 2 Spiraea Van Houttei
- 2 Forsythia Fortunei
- 2 Weigela Rosea
- 1 Hydrangea P. G.

All first class two year bushes.

Maloney Special Price, \$2.75.

10% Discount on all Cash Orders mailed on or before October 12th.

5% Discount after October 12th.



Extra Large Garden Trees

For Your Back Yard

BY this we mean trees which have been especially selected, once transplanted and scientifically treated. They will come into fruiting early. We guarantee your success provided you follow the simple directions for planting.

The value of these trees lies in the fact that they are what you might term "the cream of our nursery." We have cared for them until they have developed into just the kind of trees for your back yard or small home orchard.

A great many people make the very serious mistake of selecting small trees for their garden planting, when a few extra cents invested now will purchase trees which will fruit much earlier.

From the fact that these trees have been once transplanted, they are equipped with a beautiful root system which enables them to be-

come established quickly. Before planting be careful to have your soil loose and mellow.

Just read the planting directions and see how easy it will be for you to set your EXTRA LARGE GARDEN TREES.

Planting Instructions

Cut off about six inches of the limb growth. Prune off bruised ends of roots, if any, making a smooth cut. Dig hole deep enough so that the tree will be buried to the same depth as when standing in the nursery row, or up to the collar. Soak roots in the water one-half hour. Place trees in hole, fill in one-fourth, tread well; another one-fourth, tread well; the third one-fourth, tread well; then finish filling and tread firmly so that when the tree is set it will require a strong man to pull it out.

10% Discount on all Cash Orders mailed on or before October 12th.

5% Discount after October 12th.

Prices of All Extra Large Garden Trees SPECIALLY SELECTED

	Height	Grade	Each	Ten
STANDARD APPLE	6 to 7 Feet	XXXX	\$1.35	\$12.50
VARIETIES: Baldwin, Cortland, Delicious, Duchess, Fall Pippin, Hyslop Crab, McIntosh, Red Spy, Pound Sweet, Red Astrachan, R. I. Greening, Stayman's Winesap, Sweet Bough, Wagener, Wealthy, Yellow Transparent, Winter Banana.				
STANDARD PEAR	6 to 7 Feet	XXXX	\$1.35	\$12.50
VARIETIES: Bartlett, Beurre Bosc, Beurre D'Anjou, Clapp's Favorite, Duchess, Seckel, Sheldon.				
SWEET CHERRY	6 to 7 Feet	XXXX	\$1.35	\$12.50
VARIETIES: Bing, Black Tartarian, Gov. Wood, Lambert, Napoleon, Windsor.				
SOUR CHERRY	6 to 7 Feet	XXXX	\$1.35	\$12.50
VARIETIES: Early Richmond, Eng. Morello, Montmorency.				
PLUM	6 to 7 Feet	XXXX	\$1.35	\$12.50
VARIETIES: Abundance, Bradshaw, Burbank, German Prune, Lombard, Reine Claude, Shropshire Damson.				
PEACH	6 to 7 Feet	XXXX	\$1.35	\$12.50
VARIETIES: Belle of Georgia, Carman, Champion, Crawford Early, Elberta, Hale, Rochester, Salway.				
DWARF PEAR	4½ to 5½ Feet	XXXX	\$1.35	\$12.50
VARIETIES: Bartlett, Clapp's Favorite, Duchess, Seckel.				
QUINCE	5 to 6 Feet	XXXX	\$1.35	\$12.50
VARIETIES: Champion, Meech's Prolific, Orange.				

Maloney Extra Large XXXX 6-7 Feet

Collection No. 100—\$4.50

- 1 Red Astrachan Apple
- 1 Bartlett Pear
- 1 Lambert Sweet Cherry
- 1 Montmorency Sour Cherry





BERRIES

RASPBERRIES



Price of Strong, Healthy Plants

Twenty-five	Hundred
\$1.00	\$3.50
Thousand	
\$27.50	

Parcel Post. Any item on this page can be sent parcel post, postage prepaid, for 1 cent per bush extra.

St. Regis Red (Everbearing)
—A new acquisition to the Red Raspberry family. Fruit commences to ripen with the earliest and continues on young canes until October. Color bright crimson. Large size.

Kansas Black—This variety is a strong, vigorous grower, standing extremes of drought and cold, and bearing immense crops. Early.

Plum Farmer Black—It is very large and productive. A great favorite for market or home use. Ripens very early and quickly.

Columbian Purple—A strong grower, unexcelled for productiveness and desirable for canning. Fruit very large, purplish color, rather soft; rich, sprightly flavor.

Cuthbert Red—Yields bountifully. Large and beautiful bright red berries, which are easily picked and always command good prices. No fruit grower can afford to omit planting Cuthbert.

Cumberland Black—With its greatly superior size it combines the equally valuable characteristics of great firmness, splendid quality and wonderful productiveness. Fruit very large, firm. Midseason.

BLACKBERRIES

Price of Strong, Healthy Plants

Twenty-five	Hundred	Thousand
\$1.50	\$4.50	\$35.00

Eldorado—The vines are very hardy and vigorous, and their yield is enormous. The berries are large, jet black, borne in large clusters and ripen well together; they are very sweet, melting, have no hard core and keep perfectly for eight or ten days after picking.

Snyder—Extremely hardy, enormously productive; medium size, no hard, sour core; sweet and juicy. Ripens early.

Blowers—Very productive, of fine quality and bring the highest market price.

GARDEN ROOTS

RHUBARB

20 cents each \$1.50 per 10
\$10.00 per 100

Linnaeus—Large, early, tender and fine. The very best of all.

SAGE

Price of strong 2 year roots, 30 cents each, 10 for \$2.50.

Holt's Mammoth—Plants of strong growth.

ASPARAGUS

\$1.00 per 25 \$2.00 per 100
\$12.00 per 1000

Palmetto—Very early, even, regular size and of excellent quality.

Washington—A new rust resistant variety. Stalks large, dark green with a heavy purple overtone.

HORSE RADISH

50 cents per 10 \$3.00 per 100
Hardy roots. Plant in rich soil.

10% Discount on all Cash Orders mailed on or before October 12th.
5% Discount after October 12th.



Currants and Gooseberries

Price of all Varieties of Currant Bushes

	<i>Each</i>	<i>10</i>	<i>100</i>
2 Year No. 1 Strong Bushes	\$.20	\$1.50	\$12.50

PARCEL POST. Currants can be sent by parcel post, postage prepaid, for 2 cents per bush extra.

10% Discount on all Cash Orders mailed on or before October 12th.
5% Discount after October 12th.

CURRENTS

Cherry. Bush vigorous, stocky and compact; cluster rather short, with short stems; fruit averages large; color fine, bright red; berry thin skinned, juicy and fine flavored. One of the most productive of the large currants.

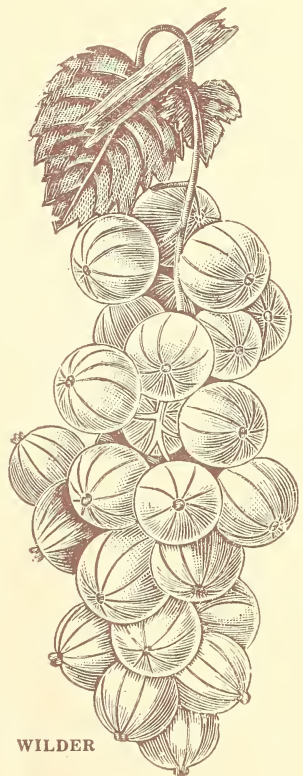
Diploma. Large, solid and of good quality, very attractive appearance, both clusters and berries being very large.

Fay's Prolific. Bush vigorous but not quite so strong a grower as Cherry. Cluster medium to long, with rather long stems. Color darker and berry averages large.

Perfection. In color it is a beautiful bright red, a size larger than the Fay; clusters average longer and the size of berries is maintained to the end of the bunch.

Red Cross. A strong growing variety. Cluster long; berry medium to large, bright red; quality good to best. It is exceedingly productive, and the currants are of large size. Further than this, the fruit is far sweeter than ordinary currants.

Wilder. Bush upright, vigorous; clusters above medium length; berries large to very large, averaging large; bright red; excellent, with a mild sub-acid flavor. Ripens early and remains bright and firm until very late. Because of its exceedingly vigorous growth, great productiveness, and high quality we recommend this as the best red currant.



WILDER

GOOSEBERRIES

Price for all varieties of Gooseberries named below, strong 2 year bushes, 30 cents each; 10 for \$2.50; 100 for \$22.50. Parcel Post 2c per bush extra.

Downing. Is the largest and best of all native American varieties. The value of Downing lies in its large size, fine quality, beautiful appearance, vigorous growth, and freedom from mildew.

Jesselyn. Marvelously productive. The fruit is of large size, color dark red.

CURRENT COLLECTION NO. 52

11 Strong, 2 Year Bushes for \$1.50

6 Wilder 1 Diploma 2 Fay's Prolific 2 Cherry

Maloney's Deliver Only Best Quality Stock



ORNAMENTALS

**A HOME
is not
COMPLETE
until
PLANTED**



HOW true it is that a home is not complete without Shrubs, Evergreens, Ornamental trees, Roses, Perennials, etc. Convince yourself by viewing a home before and after planting—which planting can be done usually at very small expense.

The American people devote considerable thought to laying out the rooms in the home so as to have it convenient and comfortable, but do not realize that for real beauty, satisfaction and comfort it is not a home until it is planted.

In assembling our varieties for the home grounds, we have endeavored to make selections of hardy types throughout; giving you color, season of flowering and height of plants at maturity, thereby enabling you to plan a continuous succession of bloom from early Spring until Winter.

In the perennials and roses we have also given color and season so that you can make selection of kinds in colors that suit your taste.

The best investment you can make is a few dollars in decorative planting around the home; once planted you would not part with them for they will increase the value of your home at least twenty-five per cent.

Plant this Fall and enjoy the effect next Summer, as all our shrubs, roses and perennials will blossom the first season.

American Elm—A natural spreading and drooping tree of our own American meadows and forests. It is very attractive in any suitable location, is entirely hardy and easily transplanted. There are more Elm trees planted along our streets and highways than any other variety.

Price, 6 to 8 feet, \$1.00 each, 10 for \$9.00; 8 to 10 feet, \$1.25 each, 10 for \$10.00.

Ash, Mountain—A very beautiful tree for ornamental planting. In the early Fall it bears clusters of bright red berries.

Price, 5 to 6 feet, \$1.50 each.

Bechtel's Crab—When in bloom appears to be covered with delicate pink, perfectly double small roses of delicious fragrance.

Price, 3 to 4 feet, \$1.25 each.

Catalpa Bungei (Umbrella Catalpa)—Grafted on stems 6 to 7 feet high, it makes an umbrella shaped top without pruning. Perfectly hardy, and flourishes in almost all

soils and climates. Leaves large, glossy, heartshaped. A very desirable ornamental.

Price of Trees, 6 to 7 feet, \$2.50 each.

Catalpa Speciosa—One of the most rapid growers. Large, heart-shaped, downy leaves, and compound panicles of white flowers.

Price, 6 to 8 feet, 60 cents each, 10 for \$5.00; 8 to 10 feet 85 cents each, 10 for \$8.00.

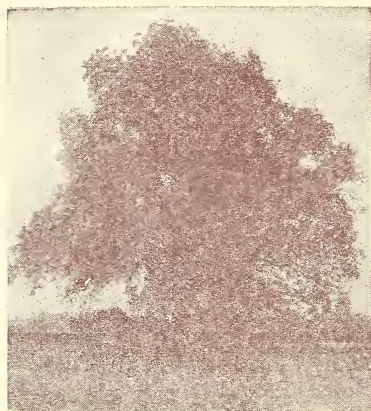
Cut-Leaved Weeping Birch—This noble tree is not only the most popular of the weeping trees, but it is decidedly the best. Its tall, slender, yet vigorous growth, graceful branches, silvery white bark and delicately cut foliage, present a combination of attractive characteristics rarely met with in a single tree.

Price, 4 to 5 feet, \$2.00 each.

Horse Chestnut, White Flowering—The well-known European species; very handsome; has magnificent spikes of white flowers. As a lawn

10% Discount on all Cash Orders mailed on or before October 12th.

5% Discount after October 12th.



AMERICAN ELM

tree or for the street it has no superior.

Price, 5 to 6 feet, \$1.75 each.

Maple, Ash-Leaved (Box Elder)—A fine, rapid-growing variety, with handsome, light green foliage and spreading head; very hardy; desirable for street planting and succeeds in many sections where other varieties do not thrive.

Price, 8 to 10 feet, \$1.75 each, 10 for \$15.00; 10 to 12 feet, \$2.00 each, 10 for \$17.50.

Maple, Norway—This is one of the hardiest ornamental shade trees, and one of the most beautiful. It makes more of a wide spreading tree than the sugar maple.

Price, 6 to 8 feet, \$2.50 each, 10 for \$22.50; 8 to 10 feet, \$3.50 each; 10 for \$32.50.

Maple, Silver-Leaved or Soft—Foliage bright green above and silvery underneath. An exceedingly rapid grower, makes a large tree. A very satisfactory tree to plant in large quantities.

Price, 6 to 8 feet, \$1.00 each, 10 for \$9.00; 8 to 10 feet, \$1.10 each, 10 for \$10.00.

Maple, Wier's Cut-Leaved—One of the most remarkable and beautiful trees, with cut or dissected foliage. Its growth is rapid, shoots slender and drooping, as graceful as cut-leaved birch.

Price, 8 to 10 feet, \$2.00 each, 10 for \$17.50; 6 to 8 feet, \$1.75 each, 10 for \$15.00.

Maple, Sugar or Rock—This native tree of ours is a universal favorite for street planting, and

desirable everywhere. It is considered a slow grower, but it is long-lived.

Price, 8 to 10 feet, \$3.00 each; 6 to 8 feet, \$2.00 each.

Mulberry, Downing—This tree is not alone valuable for the large refreshing berries it bears, but is very handsome as a lawn or street tree. This should be in every yard or garden.

Price, 6 to 8 feet, \$1.00 each, 10 for \$7.50.

Mulberry, Russian—Very hardy, vigorous grower, very productive, fruit black and of medium size.

Price, 5 to 7 feet, 75 cents each, 10 for \$6.50.

Mulberry, Tea's Weeping—The most graceful and hardy weeping tree in existence. Forms a perfect shaped head, with long, slender, willowy branches, drooping to the ground.

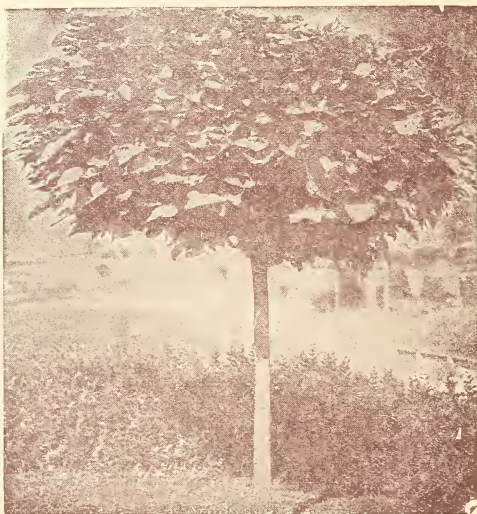
Price, 5 feet, \$3.00 each.

Poplar, Carolina—Is one of the most rapid growers among shade trees, frequently growing eight feet during one season and thus making fine shade in two or three years. It will grow in any kind of soil.

Price, 10 to 12 feet, \$1.25 each, 10 for \$10.00; 8 to 10 feet, \$1.00 each, 10 for \$7.50; 6 to 8 feet, 50 cents each, 10 for \$4.00.

Poplar, Lombardy—A well-known variety from its tall spire-like form. Where it is desired to mark a boundary line, or where there is an entrance to a driveway these trees are very effective. They transplant safely, grow quickly and are attractive and desirable.

Price, 6 to 8 feet, \$1.00 each, 10 for \$8.50; 8 to 10 feet, \$1.25 each, 10 for \$11.50.



CATALPA BUNGEI



Prunus Pissardi (Purple-Leaved Plum)—The smallest purple-leaved small shrub of recent introduction. The young branches are a very dark purple. Leaves when young are a lustrous crimson, changing to dark purple, and retain this beautiful tint until late in the autumn; no other purple-leaved tree or shrub retains its color like this. Flowers small, white, single, covering the tree. Price, 4 to 5 feet, \$1.25 each.

Prunus Triloba, Double Flowering Plum—A highly interesting and desirable addition to hardy shrubs. Flowers double delicate pink. Price, 4 to 5 feet, \$1.25 each.

Thorn, Double Pink—Double pink or rose flowers with white tips. Price, 4 to 5 feet, \$2.00 each.

Thorn, Paul's Double Scarlet—Flowers deep crimson with scarlet shade; very double. Price, 4 to 5 feet, \$2.00 each.

Willow Babylonica—Our common well-known weeping variety; forms a large round-headed, graceful tree; requires plenty of room, and where space can be spared, is quite desirable. Price, 6 to 8 feet, \$1.25 each.

Willow, Golden—This willow is especially desirable on account of its golden colored bark with light green leaves. A splendid grower. Price, 6 to 8 feet, 50 cents each, 10 for \$4.00; 8 to 10 feet, 75 cents each, 10 for \$6.50.

Nut Trees

Chestnut, American Sweet—Adapted to a great portion of this country.



TEA'S WEEPING MULBERRY

It is valuable as a nut producing tree, for timber and ornamental purposes.

Price, 4 to 5 feet, \$1.25 each, 10 for \$10.00.

Chestnut, Spanish—A handsome round-headed tree, producing abundantly very large nuts that find a ready market at good prices.

Price, 4 to 5 feet, \$1.25 each, 10 for \$10.00.

Pecans—Tree very productive; nuts delicious.

Price, 3 to 4 feet, \$1.25 each.

Butternut—A fine native tree producing a large, longish nut, which is prized for its sweet, oily, nutritious kernel.

Price, 4 to 5 feet, 90 cents each, 10 for \$8.00.



NORWAY MAPLE

Walnut, English—A fine, lofty growing tree, with handsome, spreading head; produces large crops of thin-shelled, delicious nuts which are always in demand at good prices. Every home garden should have one or more English Walnuts. Tree very hardy.

Price, 3 to 4 feet, \$1.50 each, 10 for \$12.50.

Walnut, Black—The common well-known Black Walnut, the wood of which is most beautiful and valuable. It is very productive in nuts, which are liked by many.

Price, 5 to 6 feet, 90 cents each. 10 for \$8.00. 4 to 5 feet, 75 cents each. 10 for \$7.00.

10% Discount on all Cash Orders mailed on or before October 12th.

5% Discount after October 12th.



SHRUBS

Price of All 2 yr.
Hardy Shrubs

2½ to 3½ ft., 50c each,
10 for \$4.50.

PARCEL POST—Shrubs can be sent by parcel post, postage prepaid, for 3 cents per bush extra.

DISCOUNT—10 per cent discount on all cash orders mailed on or before October 12th. 5 per cent discount after October 12th.

SHRUBS are useful in bringing out the full beauty of a house. Splendid effects can be had by planting an assortment of flowering shrubs on the lawn, not at all difficult to arrange them, for a group planted promiscuously here and there has a splendid effect.



BARBERRY THUNBERGII

Shrubs for Shady Places—Barberry, Dogwood, Hydrangea Arborescens, Forsythia, Honeysuckle, Snowberries, Snowball, Deutzia Pride of Rochester, Spiraea Van Houttei, Spiraea Billardi.

Shrubs for Foundation Plantings, and How to Plant Them as to Size:
Dwarf Growing—Barberry, Deutzia Gracilis, Deutzia Lemoinei, Spiraea Anthony Waterer, Spiraea Thunbergii.

Medium to Tall Growing Varieties—Almond, Althea, Butterfly Bush, Calycanthus, Coralberry; Deutzias: Crenata, Pride of Rochester; Golden Elder, Hydrangea A. G., Mock Orange, Japan Quince; Spiraeas: Prunifolia, Billardi, Callosa Rosea, Douglasi, Van Houttei; Syringas: Common, Golden; Weigelas: Candida, Eva Rathke, Floribunda, Rosea.

Tall Growing Varieties for Corners and Borders—Dogwood, Honeysuckle, Snowball, Lilacs.

Almond—Flowering. A very beautiful shrub covered in May with rose colored blossoms resembling small roses. Grows 4-5 feet.

Althea—A large shrub, sometimes trimmed into tree form, that blooms freely in August or September, when almost every tree is out of bloom. Vigorous grower and succeeds everywhere. Also called Rose of Sharon. We can furnish double varieties in these colors:

Double Purple, Red, Pink and White. Grows 6-8 feet.

Butterfly Bush—Seems to attract butterflies in large numbers. It produces long, graceful stems which terminate in tapering panicles of beautiful lilac-colored flowers that are of miniature size and borne by the hundreds on a flower head which is often ten inches long. It blossoms from early summer till frost. Grows 3-4 feet.



SNOWBALL, COMMON



FORSYTHIA FORTUNEI



Barberry Thunbergii—

A pretty plant of dwarf habit from Japan. Very graceful and its foliage turns to a beautiful red in the Fall. All barberries make very fine hedges. Grows 3 feet.

Calycanthus—The wood is fragrant; foliage rich; flowers are of chocolate color, having a peculiarly agreeable odor. August. Grows 5 feet.

Coralberry (Indian Currant)—Vigorous, quick growing shrub similar to snowberry, except fruit is red. Rose colored flowers in June and July. Grows 4-5 feet.

Deutzia Gracilis—Pure white flowers in June. Two feet high when fully grown.

Deutzia Crenata, Double-Flowering—A hardy shrub that in May is covered with double white flowers. Handsome, desirable shrub. 5-6 feet at maturity.

Deutzia Lemoinei—Dwarf, the flowers are large, pure white and produce freely. May. Grows 3 feet.

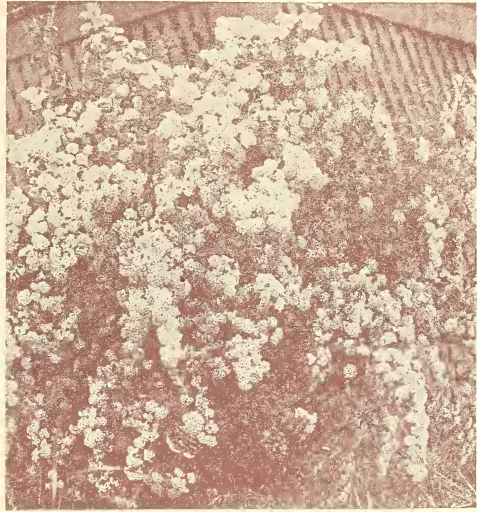
Deutzia, Pride of Rochester—Blossoms in May. Double, white. Grows 5-6 feet.

Dogwood—Red. Very conspicuous in winter when branches turn to blood red. Grows 6-8 feet.

Dogwood—White. Large white flowers in Spring before the leaves appear. Stem and branches turn to blood red in winter. Grows 6-8 ft.

Dogwood—Yellow. A striking yellow branched form. Very satisfactory for contrast. Grows 6-8 ft.

Forsythia Fortunei (Golden Bells)—Deep yellow flowers in great profusion in April. Grows 6-8 feet.



SPIRAEA VAN HOUTTEI

Golden-Leaved Elder—The best of all the colored shrubs, the foliage being as yellow as gold. Grows 5-6 feet.

Hydrangea Paniculata Grandiflora—Absolutely hardy; thrives in all soils; grows rapidly and blossoms profusely. The flowers are pure white, afterward changing to pink, and are borne in large pyramidal trusses often more than a foot long and six to eight inches in diameter. Begins to bloom early in August, and continues to bloom for several weeks. 6-7 feet at maturity.

Hydrangea Arborescens Grandiflora Alba (Hills of Snow)—This hardy American shrub is the very finest addition to this class of plants. The blooms are of the very largest size, of pure snow-white color in July and August. 4-5 feet at maturity.



WEIGELA ROSEA



GOLDEN-LEAVED ELDER IN BLOOM



BUSH HYDRANGEA—Paniculata Grandiflora

Honeysuckle, White—Tall growing; white flowers and plentiful red berries. May. Grows 8-10 feet.

Honeysuckle, Pink—Bright pink flowers in abundance, and very fresh, rounded foliage; one of the most noticeable. May. Grows 8-10 feet.

Lilac, Purple—An old favorite; purple flowers. May. 6-8 feet.

Lilac, White—A well known favorite. May. 6-8 feet.

Mock Orange—Flowers white. Derives its name owing to flowers resembling orange blossoms. Grows 6-8 feet.

Quince, Japan—Dark green foliage, and showy, deep scarlet flowers. May. Grows 5-6 feet.

Snowball, Common—Makes a large bush. Bears balls of pure white flowers in June. Grows 8-10 feet.

Snowball, Japan—A solid mass of white in June. Grows 6-7 feet.

Snowberry—Very ornamental, hardy shrub. Small, pink flowers followed by large, waxy white berries, which remain during winter. June and July. Grows 4-5 feet.

Spiraea Prunifolia—Blooms early, and is very effective. Small, double white flowers. May. Grows 4-6 feet.

Spiraea Anthony Waterer—A dwarf variety of great beauty. Its broad flat heads of red flowers continue in perfection all summer. Grows 3 feet.

Spiraea Billardi—A hardy, free growing shrub. During July every branch and twig is tipped with a spike of beautiful blood-red flowers 4 to 6 inches in length. 4-5 feet at maturity.

Spiraea Callosa Rosea—Has large panicles of deep rose-colored flowers in July and August, blooms nearly all summer. Grows 4 feet.

Spiraea Douglasi—Has spikes of beautiful deep rose-colored flowers in July and August. Grows 4-6 feet.

Spiraea Thunbergii—Forms a dense, fluffy bush 3 to 5 feet high; the feathery foliage, which is a peculiar but pleasing shade of yellowish green, changing in autumn to bright red and orange.

Spiraea Van Houttei—Undoubtedly the best of the spiraeas. White blossoms in May and June. Grows 5-7 feet.

Syringa, Common—Large, white flowers. May and June. Grows 3-5 feet.

Syringa, Golden—Large, deep yellow flowers; bush hardy. May and June. Grows 3-5 feet.

Weigelia Candida—The flowers are of the purest white, blooming in June, and all summer. Grows 5-7 feet.

Weigelia Floribunda—Flowers dark crimson, with white stamens somewhat like Fuchsia flowers. Blooms in the Spring and in the Fall. Grows 5-7 feet.

HYDRANGEA—TREE FORM

Same as Hydrangea P. G. except in tree form, being grafted on a Hydrangea stalk. When in full bloom are very attractive. 3 to 4 feet, \$1.50 each.



HYDRANGEA TREE



Weigela Eva Rathke—
Showy, bright red
flowers borne freely
during the summer.
Grows 5-7 feet.

Weigela Rosea— One
of the most charming
shrubs in cultivation.
The flowers are large
and of deep rosy
color, and are borne
in great profusion.
July. Grows 5-7 ft.

Witch Hazel (Yellow)
Grows well in shade.
Unusual because of
period of blooming.
Grows 4-5 feet.
October.

**Red-Leaved Japanese
Barberry**—It is only
once in a lifetime
that a really worth-
while, outstanding
novelty in hardy
shrubs is introduced,
and in this new Bar-
berry we have such a plant. It is
similar in all respects to the green-
leaved Japanese Barberry which is
so popular for mixing in the shrub-
bery border, as single specimens,
or for planting in clumps on the
lawn, as well as for foundation
plantings and for hedges, but the
foliage of this new variety is of a
rich, lustrous, bronzy red, similar
to the richest red-leaved Japanese
Maples. However, unlike these
and other colored shrubs in which
the coloring fades or disappears
entirely as the season advances,
this new Barberry becomes more
brilliant and gorgeous throughout
the summer, and in the fall its
foliage changes to vivid orange,
scarlet, and red shades, more bril-
liant and more effective than in the
ordinary Japanese Barberry. In
this coloring it is unequaled by any
other shrub and is followed by the
same brilliant scarlet berries com-
mon to the type, which remain on
the plant the entire winter. All
that is required to develop its bril-
liant coloring at all seasons is that
it be planted in full exposure to
the sun. 3 feet at maturity.

Price, 18 to 24 inches, \$1.00 each;
\$8.50 per 10.



Brookfield Center, Conn.

May 24, 1927

Maloney Bros., Danville, N. Y.

Gentlemen:—All plants received
from you are healthy and growing,
for which kindly accept my thanks
and appreciation. As I recently
bought my house here, I will need
plants for the next few years. Rest
assured Maloney Bros., will supply
them.

Yours very truly,
JOHN A. CAHILL.



RED-LEAVED JAPANESE BARBERRY
Popular for Planting in Clumps

Price 18-24 inches, \$1.00 each, \$8.50 per 10.



The Use of Flowers

God might have bade the earth bring
forth

Enough for great and small,
The oak tree, and the cedar tree,
Without a flower at all.

He might have made enough, enough,
For every want of ours;
For luxury, medicine, and toil,
And yet have made no flowers.

Then wherefore, wherefore were
they made
All dyed with rainbow light,
All fashion'd with supremest grace,
Upspringing day and night—

Springing in valleys green and low,
And on the mountains high,
And in the silent wilderness,
Where no man passeth by?

Our outward life requires them not,
Then wherefore had they birth?
To minister delight to man,
To beautify the earth.

To whisper hope—to comfort man
Whene'er his faith is dim;
For whoso careth for the flowers
Will care much more for Him!

MARY HOWITT.



Shrub Collection No. 21

- 1 Barberry
- 1 Coralberry
- 1 Snowberry
- 1 Deutzia Crenata
- 1 Golden Elder

All First Class, 2 Year Bushes
Maloney Special Price, \$2.75



ROSES

Price of All Varieties of Rose Bushes

Strong Bushes, 2 Year, No. 1, 75 cents each, 10 for \$7.00

DISCOUNT—10 per cent discount on all cash orders mailed on or before October 12th. 5 per cent discount after October 12th.

PARCEL POST—Roses can be sent by parcel post, postage prepaid, for 3 cents per bush extra.

ROSES are growing in favor each day. No other class of ornamentals gives as much value received as roses. Very often the bloom of the first season repays the planter many times over for the time and money spent. Our list includes the best hardy varieties carefully selected which will prove most satisfactory. All our roses are hardy field grown budded stock, that will bloom this season.

Planting and Care of Roses

Plant roses in good rich soil. Dig the holes deep enough so they can be set in the ground two inches below where they were budded. Do not trim the roots off too severely, but cut the tops off about six to eight inches above the top of the ground. Pack good rich soil thoroughly around the roots, being careful not to let any composite come in contact with the roots. Work frequently around the bushes during the growing season so as to keep the soil loose. Each following Spring cut the tops back to within ten or twelve inches of the ground and every Fall hill the earth eight to ten inches high around the bushes.



WHITE KILLARNEY



BARON DE BONSTETTEN—Red



PREMIER—Pink



RED RADIANCE



Hybrid Tea Roses

The everblooming or Hybrid Tea Roses, commonly called Monthly Roses, begin blooming in June and continue until frost.

Butterfly Rose—Bright pink shading to apricot and gold. Blossoms are large. Very prolific bearer.

Columbia—A beautiful true pink; deepening as it matures to a warm, glowing tone. It is a superior cutting variety.

General MacArthur—Dazzling crimson scarlet, exquisitely perfumed. One of the grandest red roses ever offered, either for cutting or bedding.

Gruss An Teplitz—The color is bright scarlet, shading to deep, rich, velvety crimson. It is very fragrant, the freest grower and most profuse bloomer.

J. L. Mock—A hardy rose, very large, full and fragrant. Petals silvery pink, shading to carmine pink. Vigorous in growth and a continuous bloomer.

Kaiserin Auguste Victoria—Beautiful with elegant, large pointed buds and very large, full double flowers. Color, delicate creamy white; deliciously fragrant.

Killarney Pink—One of the most popular of our garden roses. It is perfectly hardy, a robust grower. Color of sparkling, brilliant, imperial pink.

Killarney White—Similar to Killarney Pink.

Lady Ashtown—Deep carmine-pink, shading to a yellow at base of petals. Flowers large, full, high centered; recognizable by its beautifully recurved petals.

Los Angeles—Flame pink toned with coral and shaded gold at base of petals. Stems long and flowers large.

Mad. Caroline Testout—One of the most popular of the Hybrid Teas for the gar-



BUTTERFLY



FRAU KARL DRUSCHKI, White

ROSE COLLECTION NO. 20

- | | |
|--------------------|-------------------|
| 1 Butterfly—Yellow | 1 Killarney—Pink |
| 1 Premier—Pink | 1 Killarney—White |
| 1 Red Radiance—Red | |

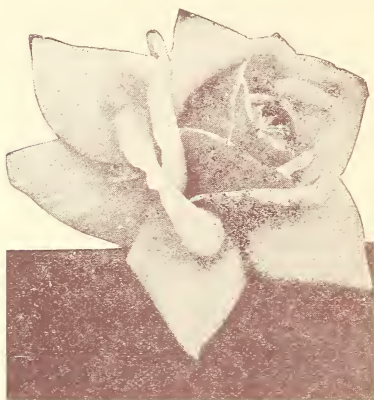
All First Class, 2 Year Bushes. Maloney Special Price, \$2.75.



GEN. JACQUEMINOT, Red



KILLARNEY, PINK



PAUL NEYRON, Red

den. The flowers are extra large, and a brilliant, shining pink.

Mad. Gabriel Luizet—Soft pink with deep flesh colored center. One of the choicest.

Maman Cochet—One of the best and most beautiful pink varieties grown. The flowers are of enormous size, borne on long, strong stems.

Mrs. Aaron Ward—Buds are deeply cupped, the open flowers delightfully attractive. Color, deep golden orange, shading outward to creamy yellow.

Ophelia—Blossoms are large, full and perfect in form and appearance. Attractive light salmon, flesh coloring shading to yellow.

Premier—Rich, dark pink flowers of good size, pleasing fragrance.

Sunburst—Flowers superb cadmium yellow, with orange yellow center, large, buds generally borne singly on long stout stems. The buds are long and pointed opening well.

Hybrid Perpetual Roses

Hybrid Perpetual Roses are not as free bloomers as the Hybrid Teas but are completely hardy and of vigorous growth. They bloom tremendously in June and usually sparingly until autumn.

Baron De Bonstetten—Flowers large very double; color rich, dark red, passing to deep velvety maroon.

Frau Karl Druschki—Snow Queen. The finest white Hybrid Perpetual. It is marvelous in its beauty in half opened bud and in the pure white of the full opened bloom. It holds its foliage well and is healthy and vigorous.

General Jacqueminot—Brilliant crimson; large and fine. Beautiful in bud and a universal favorite.

Paul Neyron—The largest of all. Deep rose color. A free bloomer and vigorous grower.

Margaret Dickson—A free summer and autumn bloomer. Flowers white with pale flesh center, of a waxy texture and fragrant.

Marshall P. Wilder—Bright cherry carmine; very fragrant and one of the freest bloomers; vigorous.

Magna Charta—Pink and carmine; very large and full; a profuse bloomer. Fragrant. Free grower.

Persian Yellow—A small, fragrant, double golden yellow flower, borne in great profusion.

Prince Camille de Rohan—Very dark velvety crimson, changing to intense maroon.

Dwarf Polyantha

(Baby Roses, Everblooming)

Called "Baby" Ramblers on account of their short, close growth.

Price: 75 cents each, \$7.00 per ten

Crimson Baby Rambler—The flowers are borne in clusters of twenty or more. May to November.

Pink Baby Rambler—The showiest and prettiest of the pink "Baby" roses. May to November.

White Baby Rambler—As delicately tinted and as full of clusters as any Polyantha rose. May to November.

Climbing Roses

(Everblooming)

Price, 2 Year No. 1 Bushes, 65 cents each, 10 for \$6.00.

Crimson Rambler—Very vigorous, entirely hardy and extremely prolific. It blooms in clusters. Of a beautiful crimson color and lasts a long time.

Excelsa—General form and type of Crimson Rambler but of far better color, hardness and habit. Brilliant scarlet-crimson flowers on plants of great vigor and beauty.

Dorothy Perkins—A beautiful shell-pink rambler. Hardy. Flowers are double, of large size, usually two inches across and borne in loose clusters.

Silver Moon—A beautiful, semi-double, pure white rose four inches in diameter, with a cluster of prominent yellow stamens in the center which add to its attractiveness.

Tausendschon (Thousand Beauties)—Varies in color. A beautiful combination of colors, including several shades of pink.

Veilchenblau (Blue Rambler)—Double flowers of light lilac, fading to light purple and blue.

White Dorothy—A rose that has gained great popularity. A duplicate of Dorothy Perkins except in color.

Yellow Rambler—Lovely yellow buds, which fade to creamy white as flower opens. Strong and hardy.



HEDGE PLANTS

California Privet—A vigorous growing variety, of fine habit, thick, glossy, nearly evergreen leaves. Of all ornamental hedge plants this is the most highly prized. The leaves are a rich green, and will remain up to Christmas. Strong Plants, well branched, 18 to 24 in., \$1.00 per 10; \$5.00 per 100; \$45.00 per 1,000. 2 to 3 feet, \$1.25 per 10; \$7.00 per 100; \$65.00 per 1,000.

Amoor River Privet (North)—The best for hedge in the North. Has stood twenty degrees below zero.

Plant hedges double rows 1 ft. apart in rows and rows 1 ft. apart alternated

Upright growth, foliage similar in appearance to California Privet. Strong Plants, 18 to 24 in., \$1.50 per 10; \$10.00 per 100; \$90.00 per 1,000. 2 to 3 ft., \$2.00 per 10; \$12.50 per 100; \$100.00 per 1,000.

Barberry Thunbergii—A pretty plant of dwarf habit from Japan. Very graceful and its foliage turns to a beautiful red in the fall. Strong Plants, 18 to 24 in., well branched, \$4.00 per 10; \$30.00 per 100. 2 to 3 ft., \$4.50 per 10; \$35.00 per 100.

HARDY CLIMBING VINES

Ampelopsis Veitchi (Boston Ivy)—This is one of the finest climbers we have for covering walls. Price of strong 2 year plants, 55 cents each, 10 for \$5.00.

Hall's Japan Honeysuckle—Hardy and of strong growth. The flowers are fragrant, pure white changing to yellow. Price of strong 2 year plants, 50 cents each, 10 for \$4.50.

Clematis Henryii—Free bloomer, producing large white flowers during the summer and early autumn. Price of strong 2 year plants, 95 cents each, 10 for \$9.00.

Clematis Jackmanni—Flowers large, intense, rich, velvety violet-purple, and produced in masses of bloom.

Price of strong 2 year plants, 85 cents each, 10 for \$8.00.

Clematis Paniculata—Flowers of medium size, fragrant, pure white, borne in immense sheets in September, when few vines are in bloom. Price of strong 2 year plants, 50 cents each, 10 for \$4.50.

Dutchman's Pipe—A rapid growing vine, desirable when dense shade is required. Price of strong 2 year vines, \$1.00 each, 10 for \$9.00.

Wisteria, Chinese Purple—A most beautiful climber of rapid growth and producing long pendulous clusters of flowers. Price of strong 2 year plants, 50 cents each, 10 for \$4.50.

PARCEL POST—Hedge Plants and Climbing Vines can be sent by parcel post, postage prepaid, for 3 cents per vine extra.

EVERGREENS

All Evergreens Balled and Burlapped

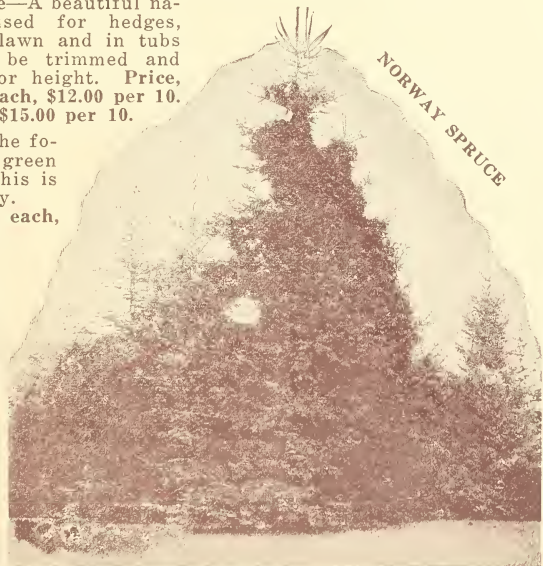
American Arbor Vitae—A beautiful native tree much used for hedges, screens, singly on lawn and in tubs for porches. Can be trimmed and kept in any form or height. Price, 18-24 inches, \$1.35 each, \$12.00 per 10. 2-3 ft., \$1.75 each, \$15.00 per 10.

Black Hill Spruce—The foliage shades from green to a bluish tint. This is a very hardy variety. Price 2-3 ft., \$3.50 each, 18-24 in., \$2.75 each.

Irish Juniper—A beautiful variety forming a tapering column. Much used for cemetery plantings. Price 18-24 in., \$2.25 ea., 2-3 ft., \$2.50 each.

Norway Spruce—The most extensively planted of all evergreens. A rapid grower, extremely hardy.

Price, 18-24 in., \$1.35 ea., \$12.00 per 10. 2-3 ft., \$1.75 ea., \$15.00 per 10.



5 Norway Spruce 2-3 ft. Special \$6.75



LILY SPECIOSUM RUBRUM



IRIS, YELLOW, SMALL BED

Chrysanthemum Hardy

Price: 25c each, \$2.00 per ten.
Indispensable for late fall bloom.
Assorted colors.



CHRYSANTHEMUMS

**GOOD
OLD FASHIONED
PERENNIALS**

Campanula Medium

(Canterbury Bells)

Price: 25c each, \$2.00 per ten.
Large, cup-shaped flowers, blue, rose
and white, mixed.

Dianthus Plumaris

(Hardy garden pinks)

Price: 30c each, \$2.50 per ten.
The old-fashioned fragrant variety.

Dianthus Barbatus

(Sweet William)

Price: 25c each, \$2.25 per ten.
Single. All colors mixed.

Foxglove—Digitalis

Price: 25c each, \$2.25 per ten.
A great favorite. Tall spires 4 to 6
feet high. Thimble shaped flowers
in shades of white, rose and pur-
ple mixed together.

Golden Glow

Price: 25c each, \$2.00 per ten.
Flowers, produced in profusion.

Helenium

Price, 30c each, \$2.50 per ten.
Old gold changing to red.

Hollyhocks

Price: 20c each, \$1.75 per ten.
No perennial garden is complete
without these. We have pink,
white, yellow and scarlet.



HOLLYHOCKS, DOUBLE

Iris

Price, 25c each, \$2.25 per ten.

- Atropurpurea—Purple.
- Blue King—Clear, bright blue.
- Queen of May—Rosy Lavender.
- Sherwin Wright—Golden yellow.

Larkspur—Delphinium

Price, 25c each, \$2.25 per ten.

- Belladonna—Large spikes of delicate turquoise blue.
- Formosum—Dark blue.

Lilies

Price, 30c each, \$2.50 per ten.

- Auratum—Flower heads large with broad petals gracefully recurved. White with crimson shadings, and wide gold band down center of each petal. Prolific bloomer.
- Speciosum Rubrum—Blooms profusely during August. Petals white, spotted with rich crimson.
- Speciosum Magnificum—Large flowers of rich, deep red.

Peonies

Price, 55c each, \$5.00 per ten.

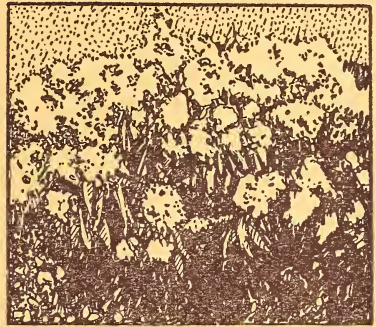
- Festiva Maxima—The immense, double flowers are pure snow-white, with a beautiful flake of carmine in the center.
- Mad. Lebon—Valuable late red. Flowers ball-shape, cherry rose.
- Grandiflora—Bright sea-shell pink; overlaid with delicate lilac and salmon pink—an enchanting color.

Shasta Daisy

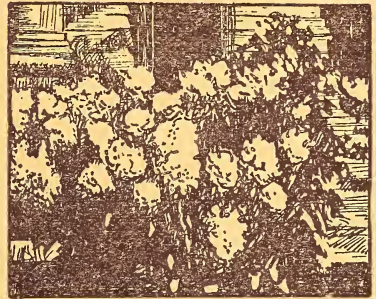
Price, 25c each, \$2.25 per ten.

- Large, snow-white flowers; fall.

All perennials can be sent by parcel post for 2c each extra.



PHLOX, HARDY



PEONY, Pink

Phlox

- Price, 25c each, \$2.25 per ten.
- Beacon—Brilliant cherry-red.
- Mrs. Jenkins—Pure white. Early.
- Rijnstrom—Beautiful clear pink.
- Thor—Deep salmon-pink.



LARKSPUR



DIANTHUS OR HARDY PINKS

